

Архангельск (8182)63-90-72  
Астана (7172)727-132  
Астрахань (8512)99-46-04  
Барнаул (3852)73-04-60  
Белгород (4722)40-23-64  
Брянск (4832)59-03-52  
Владивосток (423)249-28-31  
Волгоград (844)278-03-48  
Вологда (8172)26-41-59  
Воронеж (473)204-51-73  
Екатеринбург (343)384-55-89  
Иваново (4932)77-34-06

Ижевск (3412)26-03-58  
Иркутск (395)279-98-46  
Казань (843)206-01-48  
Калининград (4012)72-03-81  
Калуга (4842)92-23-67  
Кемерово (3842)65-04-62  
Киров (8332)68-02-04  
Краснодар (861)203-40-90  
Красноярск (391)204-63-61  
Курск (4712)77-13-04  
Липецк (4742)52-20-81  
Киргизия (996)312-96-26-47

Магнитогорск (3519)55-03-13  
Москва (495)268-04-70  
Мурманск (8152)59-64-93  
Набережные Челны (8552)20-53-41  
Нижний Новгород (831)429-08-12  
Новокузнецк (3843)20-46-81  
Новосибирск (383)227-86-73  
Омск (3812)21-46-40  
Орел (4862)44-53-42  
Оренбург (3532)37-68-04  
Пенза (8412)22-31-16  
Россия (495)268-04-70

Пермь (342)205-81-47  
Ростов-на-Дону (863)308-18-15  
Рязань (4912)46-61-64  
Самара (846)206-03-16  
Санкт-Петербург (812)309-46-40  
Саратов (845)249-38-78  
Севастополь (8692)22-31-93  
Симферополь (3652)67-13-56  
Смоленск (4812)29-41-54  
Сочи (862)225-72-31  
Ставрополь (8652)20-65-13  
Казахстан (772)734-952-31

Сургут (3462)77-98-35  
Тверь (4822)63-31-35  
Томск (3822)98-41-53  
Тула (4872)74-02-29  
Тюмень (3452)66-21-18  
Ульяновск (8422)24-23-59  
Уфа (347)229-48-12  
Хабаровск (4212)92-98-04  
Челябинск (351)202-03-61  
Череповец (8202)49-02-64  
Ярославль (4852)69-52-93

<https://weforma.nt-rt.ru/> || [wmb@nt-rt.ru](mailto:wmb@nt-rt.ru)

## Rotary Dampers

with high-torque range

WRD-H 7550

WRD-H 9565

WRD-H 12070



# Benefits

**Material:**

- Aluminium and steel

**Applications:**

- Mechanical and plant engineering
- Vendingmachines, Counters
- Car industry and sanitary industry

**RoHS-conform:**

- Directive 2002/95/EC

**Temperature:**

- Standard: -10°C - +60°C

**Deceleration:**

- Controlled damping with rotary movements
- Torques up to 700 Nm
- Both sides, Right-turning and left-turning
- Adjustable

**Special models:****Stainless steel VA:**

- Housing Stainless steel  
V2A / DIN 1.4305 / AISI 303
- Piston rod DIN 1.4125 / AISI 440C

**Applications:**

- Food industry, Outside machinery,  
Medical technology

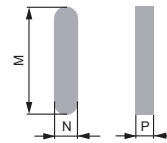


R (CW)*	L (CCW)*	C*	M* max. (Nm)	M* min. (Nm)	M* Reverse Running L/R	Material
WRD-H 7550-R	WRD-H 7550-L	WRD-H 7550-C	250	65	30	Steel
WRD-H 9565-R	WRD-H 9565-L	WRD-H 9565-C	500	140	110	
WRD-H 12070-R	WRD-H 12070-L	WRD-H 12070-C	700	270	250	

	ØA	ØB	ØC	D	E	F	G	H	J	T	ØK	ØL
WRD-H 7550	90	25 f7	130	100	10	25	140	6,4	8	4	8,2	110,0
WRD-H 9565	120	30 f7	155	125	15	32	175	9,0	10	5	8,2	137,5
WRD-H 12070	148	35 f7	188	155	15	45	215	10,0	10	5	10,5	168,0

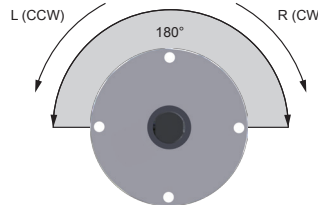
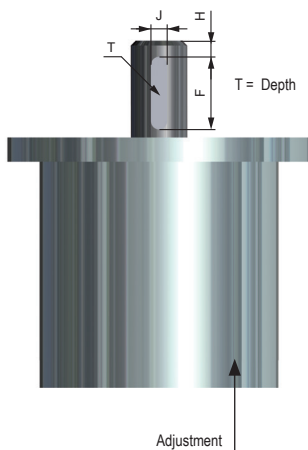
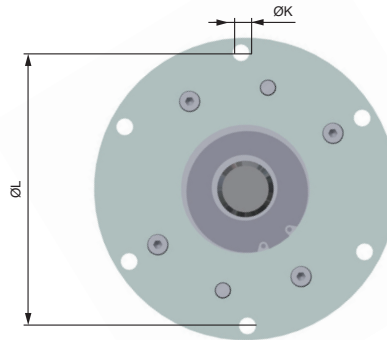
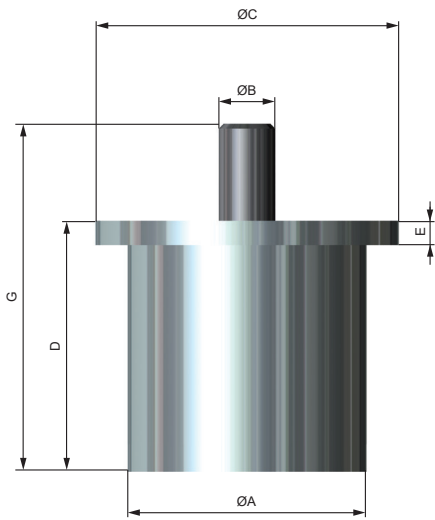
### FEATHER KEY

	M	N	P
WRD-H 7550	25	8	7
WRD-H 9565	32	10	8
WRD-H 12070	45	10	8



optional

\* R (CW): Clockwise  
L (CCW): Counter-clockwise  
C: Clockwise and counter-clockwise  
M: Torque



### Stainless steel

Clockwise	Anti-clockwise	Clockwise + anticlockwise	Torque
			Nm
WRD-H 7550-R-VA	WRD-H 7550-L-VA	WRD-H 7550-C-VA	250
WRD-H 9565-R-VA	WRD-H 9565-L-VA	WRD-H 9565-C-VA	500
WRD-H 12070-R-VA	WRD-H 12070-L-VA	WRD-H 12070-C-VA	700

### TORQUE

Clockwise	Anti-clockwise	Clockwise + anticlockwise	Torque Nm	Opening angle °	Weight g
WRD-H 7550-R	WRD-H 7550-L	WRD-H 7550-C	250	180	4500
WRD-H 9565-R	WRD-H 9565-L	WRD-H 9565-C	500	180	10000
WRD-H 12070-R	WRD-H 12070-L	WRD-H 12070-C	700	180	17400

Idle: At the beginning of the deceleration max. 5°

# Important Information

**Rotary dampers can not be used as end stop; external stop must be provided before the end of the stroke.**

## Temperature

WRD-H: -10 °C - +60 °C

Reference temperature for all technical information: 20°C

At a higher temperatures the energy absorption or torque is reduced.

Fix the rotary damper at the intended bores and flats. It is not allowed to loaded rotary dampers in a static way or to fix them by welding.

Rotary damper can not be used with aggressive fluids. Exception WRD-H...VA

## Adjustment

If the mass in a trial run impacts excessively hard on the end position select the next model with higher torque for the series

Rotary dampers of the series WRD-H 7550, 9565 and 12070 are adjustable. If the damping is not sufficient, increase the damping continuously by rotating the adjustment to „+“.

If the mass don't reach the end position or the time is too long, decrease the damping continuously by rotating the adjustment to „-“. If the adjustment is not sufficient in an end position contact Weforma.

Rotary dampers should under no circumstance be loaded over the damping angle mentioned in the catalogue.

## Fundamentals

Rotary dampers may under no circumstances be:

-painted



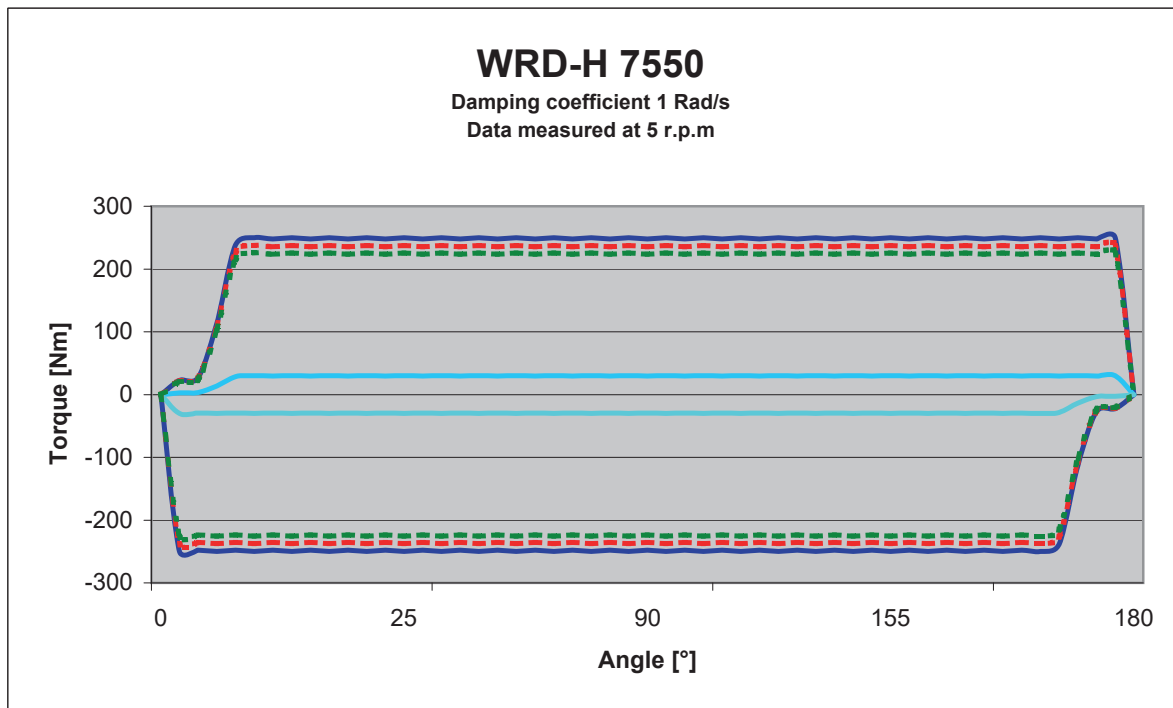
-welded



-held with clamps




The products must be protected against contamination, fluids and air pressure. We offer special solutions for these applications. When rotary dampers are used parallel the size of the model and the used degree of hardness / used adjustment has to be the same. The load has to be distributed equally. When a shock absorber is used for an emergency case, an external end stop must be provided. If the absorption should be insufficient, please contact Weforma or the respective representation. You will find further technical informations to the series in our catalogue.




 Execution WRD-H 7550 C maximum damping in both directions at 20 ° C

 Execution WRD-H 7550 C maximum damping in both directions at 40 ° C

 Execution WRD-H 7550 C maximum damping in both directions at 60 ° C

 Execution WRD-H 7550 R maximum returndamping at 20 ° C

 Execution WRD-H 7550 L maximum returndamping at 20 ° C

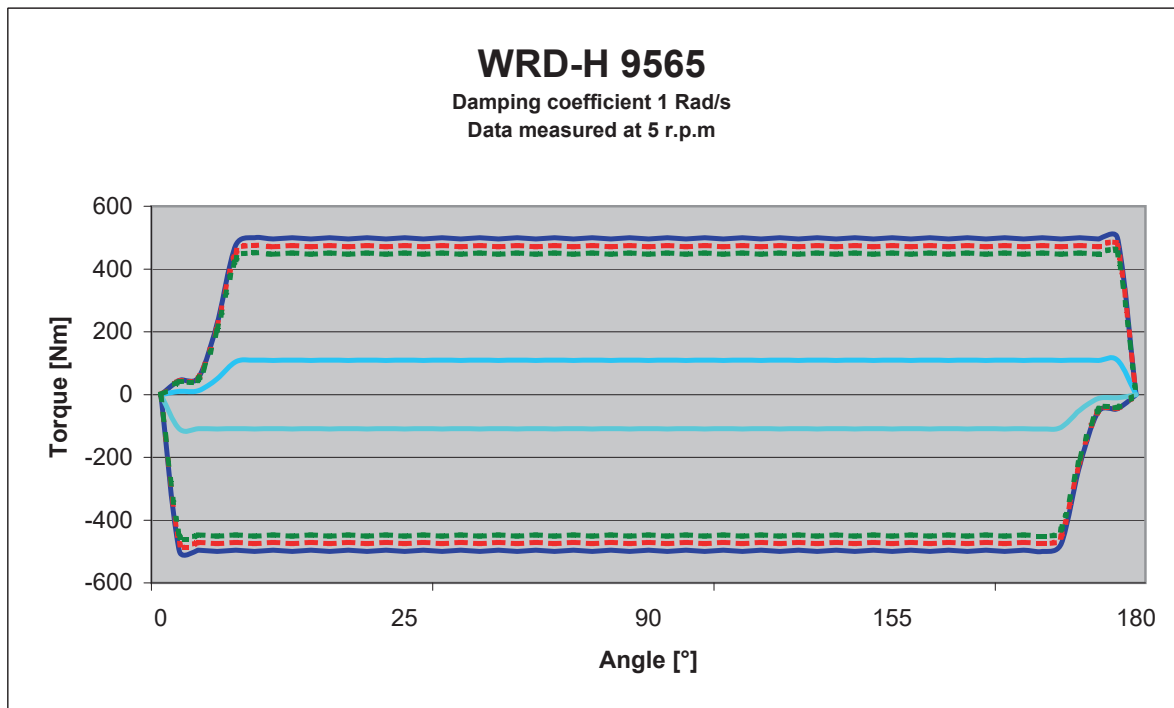
Maximum angle 180°

Execution "R" and "L" only in one direction

The values may vary depending on the adjustment and the speed

This damper is adjustable

Subject to technical changes



Execution WRD-H 9565 C maximum damping in both directions at 20 ° C

Execution WRD-H 9565 C maximum damping in both directions at 40 ° C

Execution WRD-H 9565 C maximum damping in both directions at 60 ° C

Execution WRD-H 9565 R maximum returndamping at 20 ° C

Execution WRD-H 9565 L maximum returndamping at 20 ° C

Maximum angle 180°

Execution "R" and "L" only in one direction

The values may vary depending on the adjustment and the speed

This damper is adjustable

Subject to technical changes

Архангельск (8182)63-90-72  
 Астана (7172)727-132  
 Астрахань (8512)99-46-04  
 Барнаул (3852)73-04-60  
 Белгород (4722)40-23-64  
 Брянск (4832)59-03-52  
 Владивосток (423)249-28-31  
 Волгоград (844)278-03-48  
 Вологда (8172)26-41-59  
 Воронеж (473)204-51-73  
 Екатеринбург (343)384-55-89  
 Иваново (4932)77-34-06

Ижевск (3412)26-03-58  
 Иркутск (395)279-98-46  
 Казань (843)206-01-48  
 Калининград (4012)72-03-81  
 Калуга (4842)92-23-67  
 Кемерово (3842)65-04-62  
 Киров (8332)68-02-04  
 Краснодар (861)203-40-90  
 Красноярск (391)204-63-61  
 Курск (4712)77-13-04  
 Липецк (4742)52-20-81  
 Киргизия (996)312-96-26-47

Магнитогорск (3519)55-03-13  
 Москва (495)268-04-70  
 Мурманск (8152)59-64-93  
 Набережные Челны (8552)20-53-41  
 Нижний Новгород (831)429-08-12  
 Новокузнецк (3843)20-46-81  
 Новосибирск (383)227-86-73  
 Омск (3812)21-46-40  
 Орел (4862)44-53-42  
 Оренбург (3532)37-68-04  
 Пенза (8412)22-31-16  
 Россия (495)268-04-70

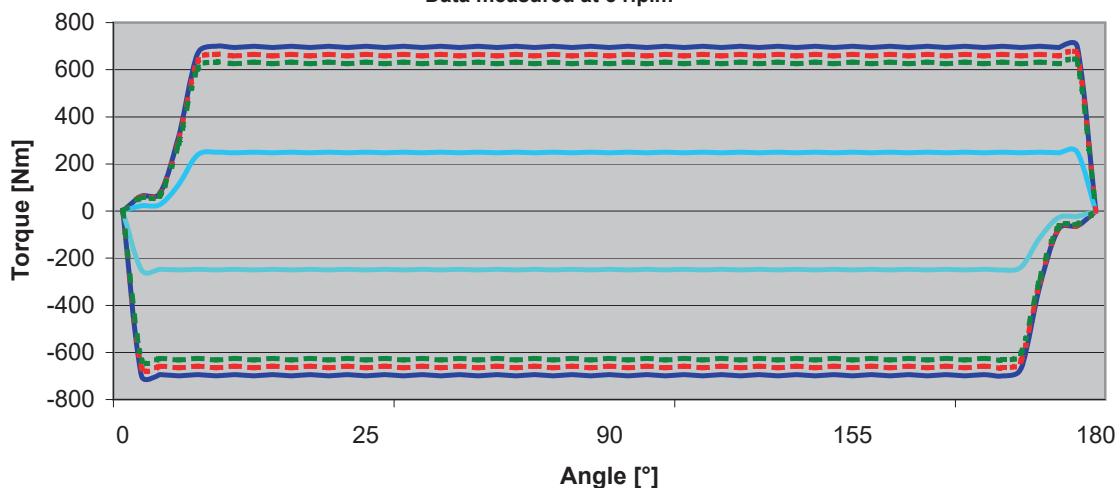
Пермь (342)205-81-47  
 Ростов-на-Дону (863)308-18-15  
 Рязань (4912)46-61-64  
 Самара (846)206-03-16  
 Санкт-Петербург (812)309-46-40  
 Саратов (845)249-38-78  
 Севастополь (8692)22-31-93  
 Симферополь (3652)67-13-56  
 Смоленск (4812)29-41-54  
 Сочи (862)225-72-31  
 Ставрополь (8652)20-65-13  
 Казахстан (772)734-952-31

Сургут (3462)77-98-35  
 Тверь (4822)63-31-35  
 Томск (3822)98-41-53  
 Тула (4872)74-02-29  
 Тюмень (3452)66-21-18  
 Ульяновск (8422)24-23-59  
 Уфа (347)229-48-12  
 Хабаровск (4212)92-98-04  
 Челябинск (351)202-03-61  
 Череповец (8202)49-02-64  
 Ярославль (4852)69-52-93

<https://weforma.nt-rt.ru/> || [wmb@nt-rt.ru](mailto:wmb@nt-rt.ru)

## WRD-H 12070

Damping coefficient 1 Rad/s  
 Data measured at 5 r.p.m



Execution WRD-H 12070 C maximum damping in both directions at 20 ° C

Execution WRD-H 12070 C maximum damping in both directions at 40 ° C

Execution WRD-H 12070 C maximum damping in both directions at 60 ° C

Execution WRD-H 12070 R maximum returndamping at 20 ° C

Execution WRD-H 12070 L maximum returndamping at 20 ° C

Maximum angle 180°

Execution "R" and "L" only in one direction

The values may vary depending on the adjustment and the speed

This damper is adjustable

Subject to technical changes